

FlexShooter User Manual

Thanks for buying the FlexShooter ballhead, you made a great decision by choosing the finest piece of equipment, it will serve you for a long period of time. By following this manual, you may ensure you can utilize all of its features for your satisfaction.

FlexShooter ballheads are multifunctional, capable of fulfilling all the functions, one may expect from a photographic tripodhead. It consists of a smooth moving, very stable ballhead with adjustable tension, that may be used as a leveling base, and a spring balanced two-way head.

Mounting your FlexShooter ballhead on the tripod:

On the base of the head, there's a standard 3/8 thread for mounting.

Lock the lever on the outer housing tightly, then mount the Flexline head on your tripod.

Mounting your Camera on the FlexShooter head:

FlexShooter heads are equipped with a quick release clamp, engineered specifically for this head. It contains the adjustment mechanism for the two-way head, and it makes possible to mount your camera properly, whether you are using a cameraplate or a lensplate. Your optics always must face the direction indicated on the top of the clamp.



In other words the smaller ball is a two-way head, that only works properly when your camera's optical axis is parallel with the tilt plane. That must be assured by mounting the camera according to the arrow on the quick release clamp.

There are two knobs on your quick release clamp.

A black one to open/close the clamp,
and a silver one for tension adjustment of the inner ball.

First set your FlexShooter head in an upright position, secure both the silver knob and the black lever on the outer housing for safety, open the quick release clamp with the black knob, then mount your camera, according to the arrow on the clamp. The clamp can accommodate Arca style plates.

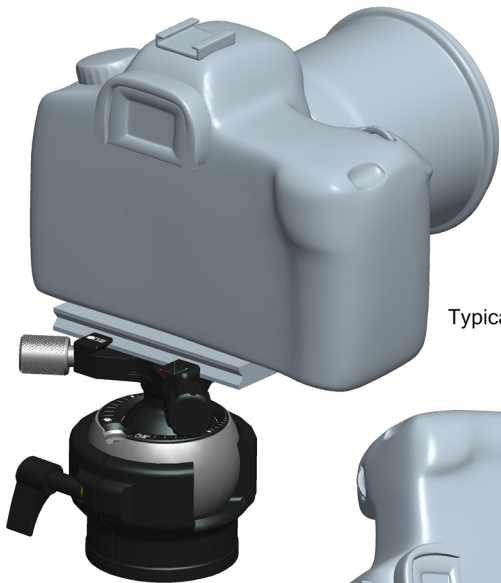
Setting the level plane:

1. Secure the inner ball with the silver knob
2. unlock the outer ball, while holding your Camera with your hand
3. set the level on the circular vial, built in the outer ball,
4. lock the outer ball
5. unlocking the silver knob, you may use the inner ball as a two-way head with a leveled base.

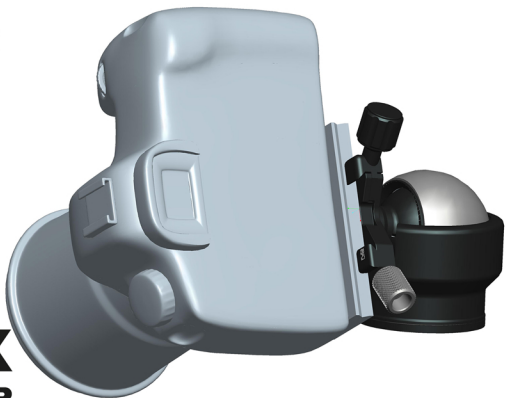
Using the FlexShooter head as a ballhead.

1. Lock the inner ball with the silver knob
2. Unlock the outer ball
3. You may use the outer ball as a traditional ballhead with adjustable friction, by the black lever, you can move your Camera to any possible position.

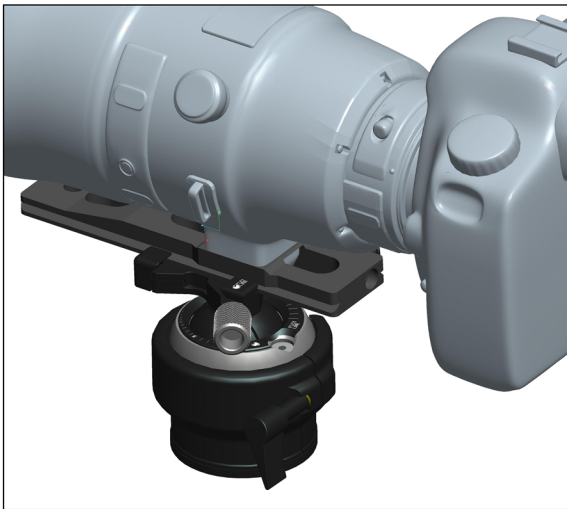




Typical uses of the FlexShooter ballhead



FLEX
SHOOTER



Your FlexShooter head is capable to support the heaviest super telephoto equipment. For the most comfortable and effective working of the spring balance system we recommend to lower the center of gravity by using one of our replacement low lensfoot (BigFoot). When properly mounted your lens on the head, the silver knob is on your left hand for an ergonomic use. Always balance your equipment above the ballhead before use.



**FLEX
SHOOTER**

For more detailed video instructions,
please visit our site at www.ballhead.com