



FS7 Z-Finder V2

Specifically designed to suit the shape and size of the Sony FS7 Monitor, the FS7 Z-Finder V2 comes with a flip up frame designed to clamp onto the FS7 LCD. While the Z-Finder can pop on and off the frame, the red lever at the bottom of the frame allows you to quickly flip the Z-Finder up without removing it from the frame.

This Z-Finder model has a newly designed sun mask to reduce the possibility of damage to your camera LCD screen. Additional -1, and/or +4 diopters are available for purchase if needed.

WARNING:

The Z-finder is a magnifier and as such will magnify the sun which can damage the LCD screen if the sun is allowed to shine directly through the Z-finder lens. Use the enclosed lens cap to block light from entering your Z-finder when not in use.



Check out our tutorial videos at zacuto.com

Parts & Features

1 Z-Finder 1.8x Magnification

1 Lanyard



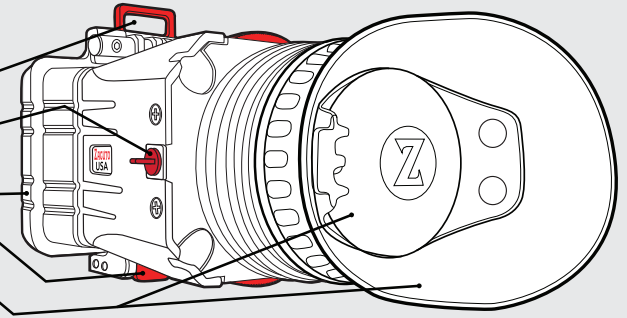
1 Frame Lock

1 Lanyard Loop

1 Flip Up Frame

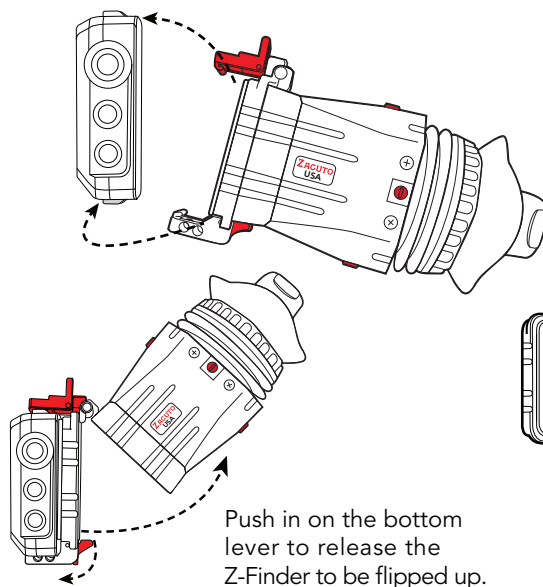
1 Flip Up Frame Lever

1 Eyecup w/Lens Door



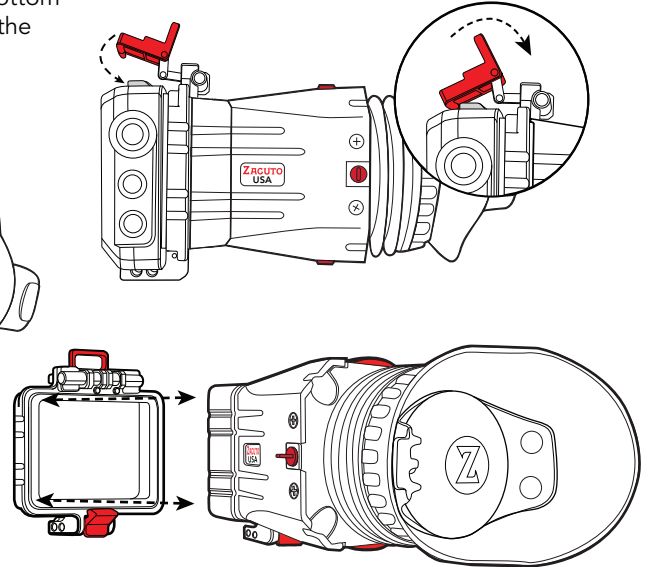
Mounting Z-Finder

1 Unlock the Z-Finder Frame Lock. Hook the bottom of the Z-Finder frame to the bottom latch of the LCD Screen.



Push in on the bottom lever to release the Z-Finder to be flipped up.

2 Push the frame up against the LCD Screen and lock the Z-Finder Frame Lock in place.

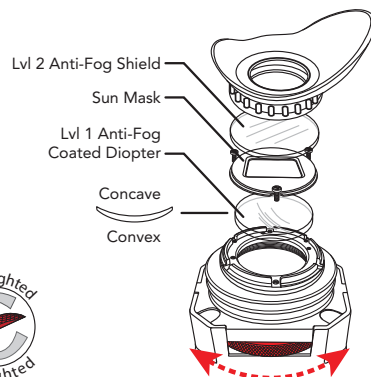


The Z-Finder can be removed from the flip up frame by pressing in on the sides of the Z-Finder and pulling down and away.

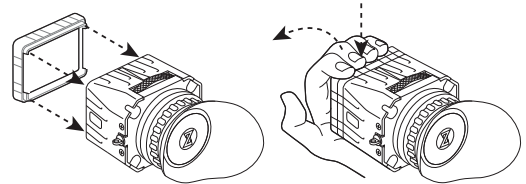
Operating FS7 Z-Finder

If you're unable to focus using the red focus ring, then use the extender frames as shown. When using the diopter wheel for fine focus tuning use letters in menu screen.

For additional focus range insert drop in diopters as shown below. To insert Lvl 2 Anti-Fog Shield see diagram below. (+4 through -1 Diopters are sold separately.)



To remove extender frames, press down in middle and pull away



- 1 Loosen screws and rotate sun mask until all three notches align with screws.
- 2 Remove sun mask by lifting up and insert your desired diopter, convex side down.
- 3 Place sun mask back on top of diopter. Rotate sun mask to original position and tighten screws.

