



Oben™

ACM-2400/2400L

4-Section Aluminum Monopod



You're on steady ground™

Thank you for choosing Oben™

Congratulations on the purchase of your new Oben monopod. The Oben™ ACM-2400/2400L is a versatile and durable monopod. While it has a greater weight capacity, it is still compact and easy to travel with. The leg features secure flip-locks for swift height adjustment.

A wrist strap is included to help secure the monopod and keep it stable during shooting.

The ACM-2400L can easily be converted into a tripod with a set of detachable legs that are removed from the base of the monopod when needed.

Please read this entire manual before using the ACM-2400/2400L monopod.

Note: Images are for illustrative purposes only. Actual product may vary.



Warnings:

Do not exceed the monopod's maximum load capacity (see the product tag).

Ensure that all appropriate locks are engaged when necessary.

Monopod should only be used in temperatures ranging between -22° to 140° Fahrenheit. Do not operate in saltwater. Dry monopod if it should become wet.

Remove the camera from the monopod during transport.

Keep out of reach of children.

Integrated Mount

The top mount offers the option to mount a camera directly, or a ballhead can be used for greater control.

Wrist Strap

Wrist strap for more secure handling while shooting.

Leg Warmer

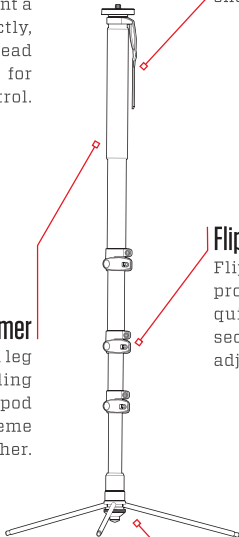
Padded leg for handling the tripod in extreme weather.

Flip-Locks

Flip-locks provide quick and secure height adjustment.

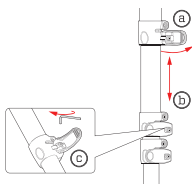
Detachable Legs

Legs can be used to convert to a tripod (*only ACM-2400L*).



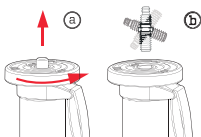
1. Height Adjustment

A secure flip-lock design allows for rapid height adjustment for the monopod. To adjust the height, open the lever (a), position the leg at the desired height (b), and close the lever to lock the leg in place. The tension in the flip locks can be adjusted (c) using the included hex key. Open the lever to reveal the screw underneath the lock and turn clockwise to tighten, or counter clockwise to loosen.

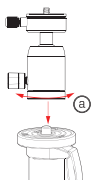


2. Mounting Screw

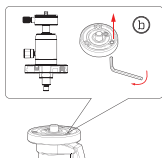
The tripod comes with a dual 3/8" and 1/4" mounting screw, allowing you to mount any tripod head or camera. To switch between the two sizes, remove the plate from the tripod by turning it counter-clockwise. Remove the screw, and insert it back into the plate in the opposite orientation. Mount the plate back onto the tripod by turning it clockwise.



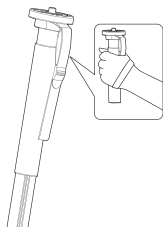
3. Mounting A Ballhead



To mount the head, make sure that the tripod mount on the bottom is aligned with the tripod's mounting screw ① and twist clockwise until fully secured. Do not over tighten, as this may cause damage to the tripod or head.



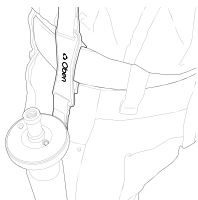
For compatible ballheads, an additional screw can be inserted underneath the mounting base ② to prevent the ballhead from coming loose.



For more steady shooting, secure the hand strap around your wrist while also gripping the pad (as shown). Ensure that there is adequate tension between the strap and your wrist to increase stability.

5. Belt Clip

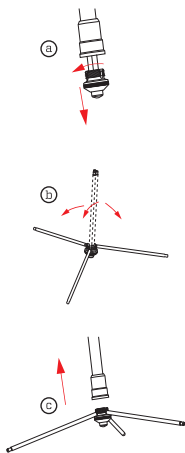
The monopod's wrist strap includes an integrated belt clip. Simply slide the clip onto a belt for hands-free transport.



6. Detachable Legs

ACM-2400L Only:

For even more stability, a set of detachable legs can be mounted to the bottom of the monopod to convert it into a tripod-like platform. Remove the detachable legs from the bottom of the monopod (a) by turning it counter-clockwise and removing the legs. Open the legs up (b) and reinsert the threaded top of the base into the bottom of the monopod (c) while turning it clockwise until its hand tight and secure.





www.obensupports.com

© Copyright 2011 Oben Inc.

All other trademarks are the property of their respective owners