

Light efficiency:

Infinity Lumen/Watt

Light quality:

CRI: 97.0

Color temperature:

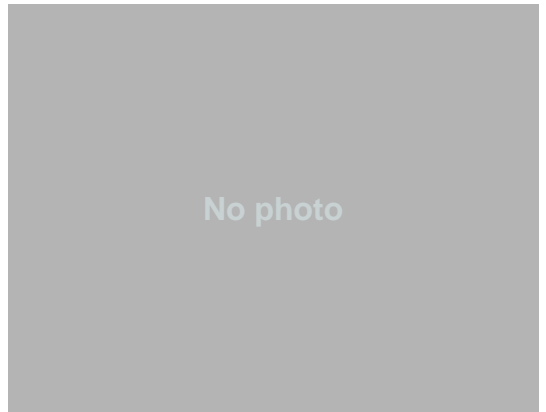
5701 K

Output: 2795 lm

Peak: 727 cd

Power: - W

PF: n/a



Product name:

Titan 5500K full power psu

Item number:

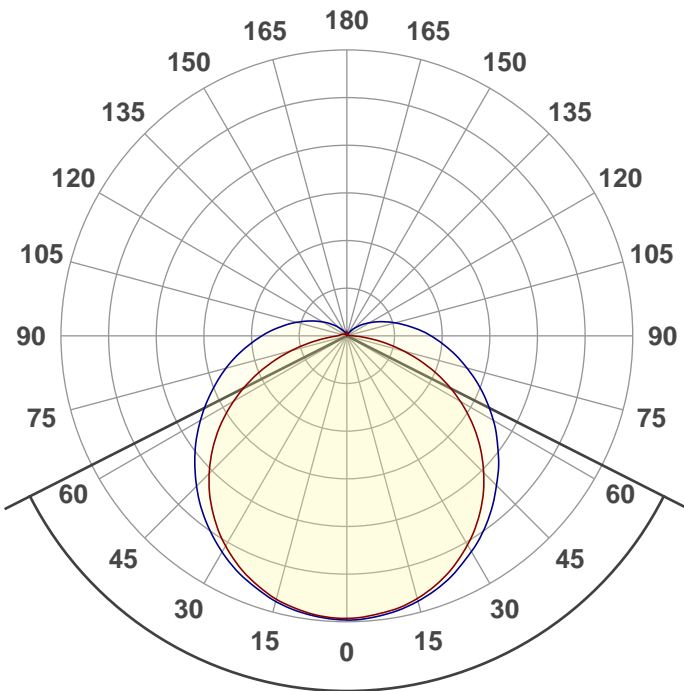
FP1

Date and time:

2/13/2019 5:44:39 PM

Description:

5500K full power psu



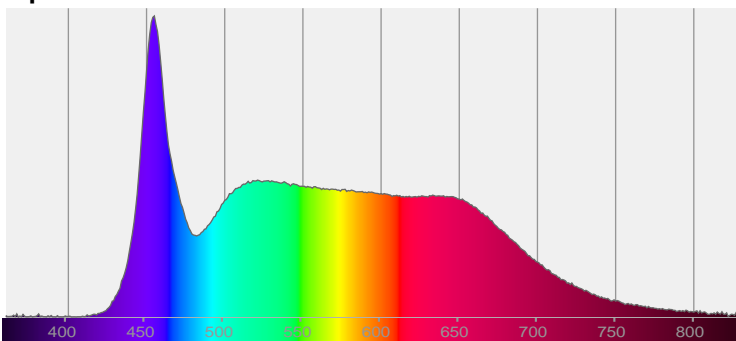
Beam angle

126.3°

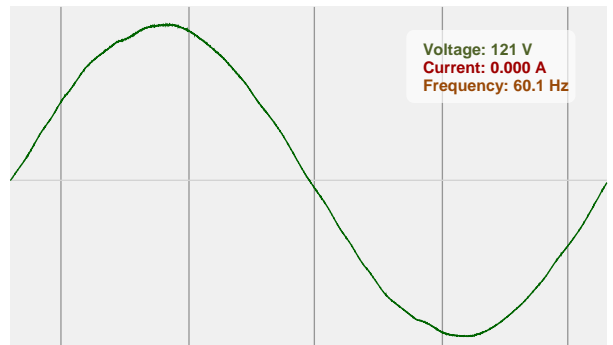


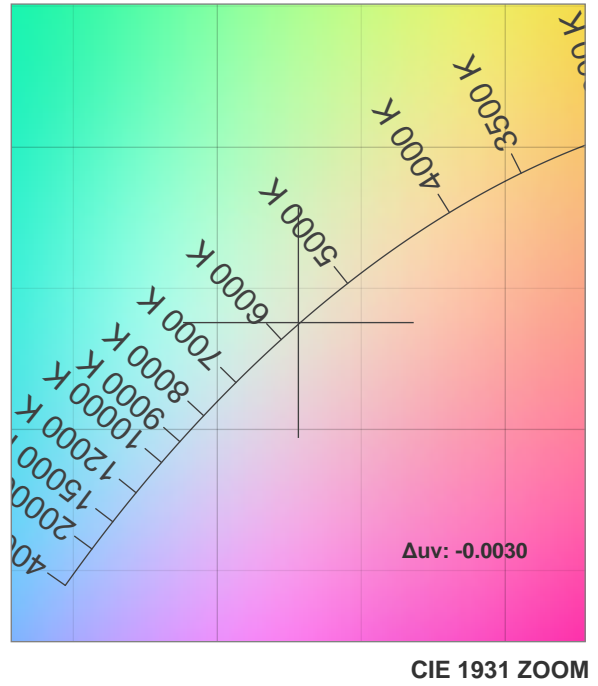
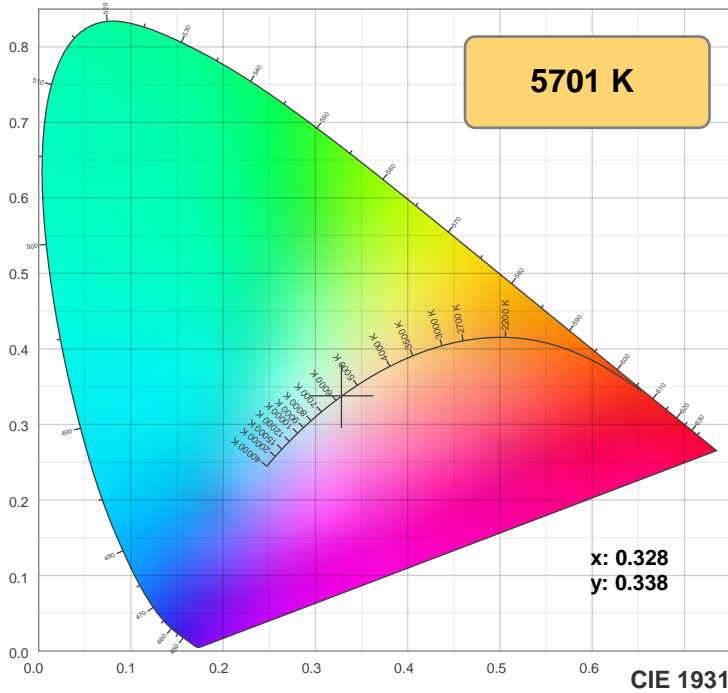
CIE 1931
x: 0.328
y: 0.338

Spectra

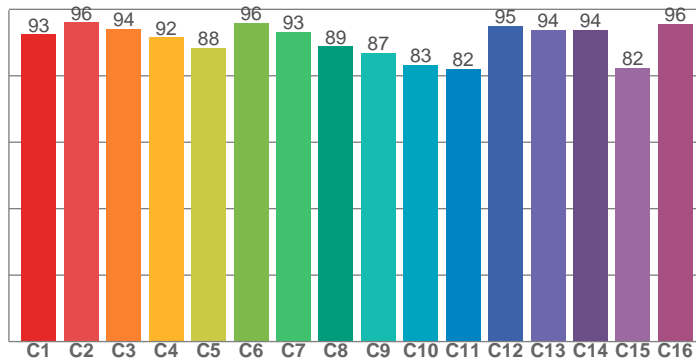


Power

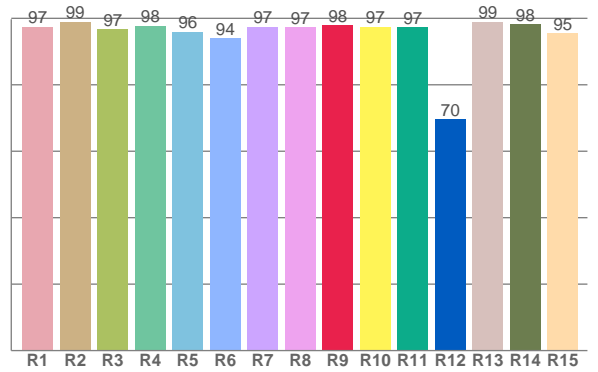




TM30: 90.5



CRI: 97.0 (R1-R8)



CRI R values, only R1-R8 are used to calculate final CRI value

R1	R2	R3	R4	R5	R6	R7	R8	R9	R10	R11	R12	R13	R14	R15
97.4	98.9	96.8	97.8	96.0	94.1	97.5	97.2	98.0	97.5	97.4	69.6	98.9	98.3	95.5

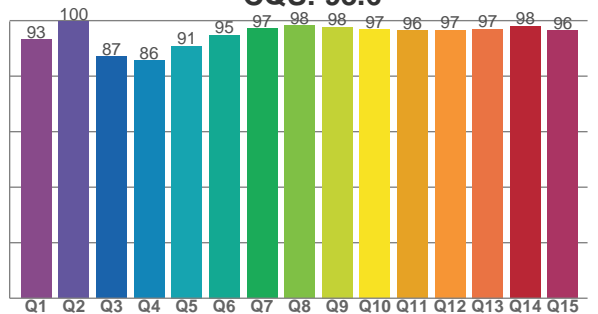
TM30 C values, 16 binned values out of total of 99 C values

C1	C2	C3	C4	C5	C6	C7	C8	C9	C10	C11	C12	C13	C14	C15	C16
92.5	96.1	94.2	91.5	88.4	95.8	93.2	88.9	86.9	83.3	82.0	95.0	93.8	93.8	82.4	95.6

CQS Q values

Q1	Q2	Q3	Q4	Q5	Q6	Q7	Q8	Q9	Q10	Q11	Q12	Q13	Q14	Q15
93.2	99.6	87.0	85.6	90.8	94.9	97.1	98.2	97.7	96.8	96.4	96.5	97.0	98.0	96.5

CQS: 93.6



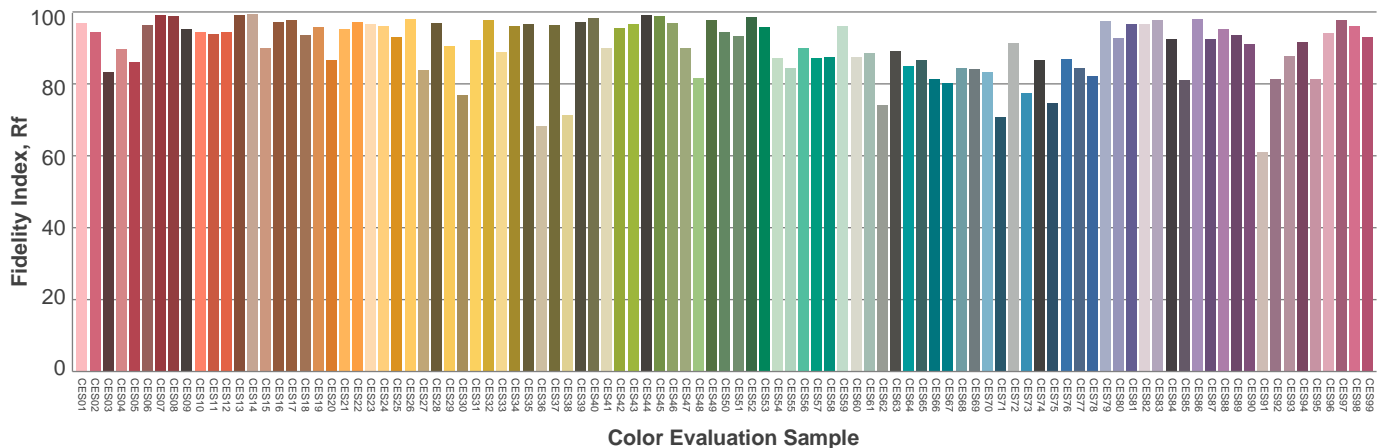
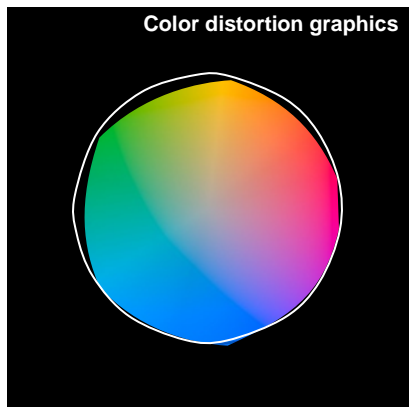
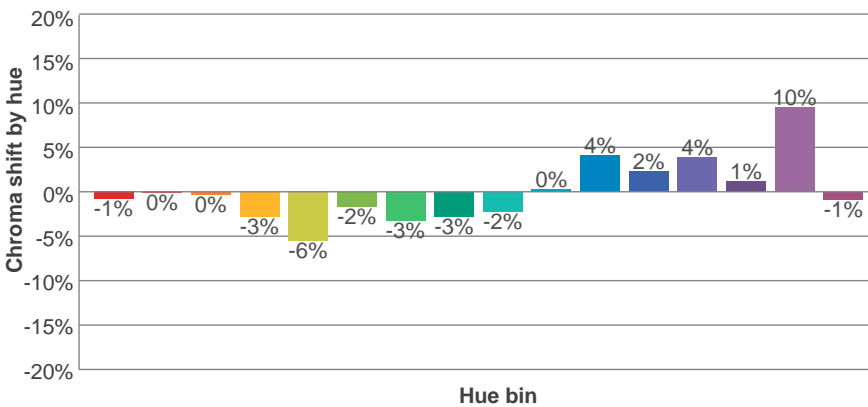
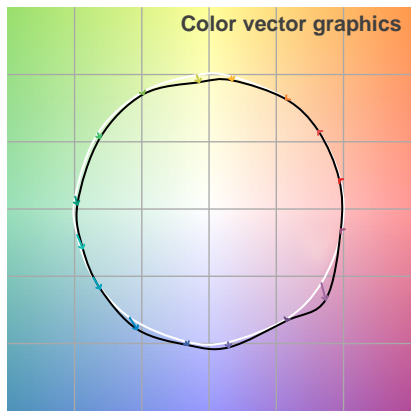
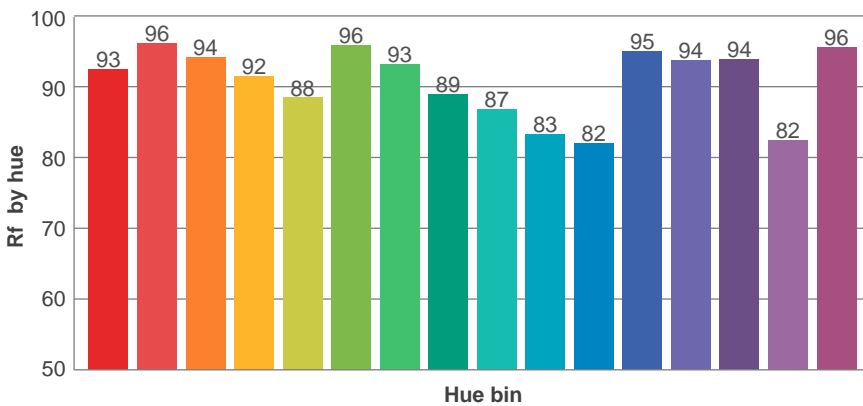
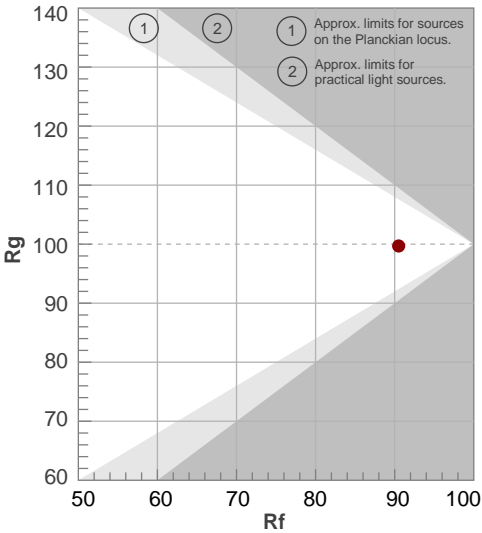
Color parameters

Color temperature	Color rendering index	Red component	Color fidelity	Color gamut	Color quality scale	Color coordinate cie 1931	Color coordinate cie 1931	Color coordinate	Color coordinate	Color deviation from black body
CCT	CRI	CRI R9	TM30 Rf	TM30 Rg	CQS	x	y	u	v	Δuv
5701 K	97.0	98.0	90.5	99.7	93.6	0.328	0.338	0.205	0.317	-0.0030

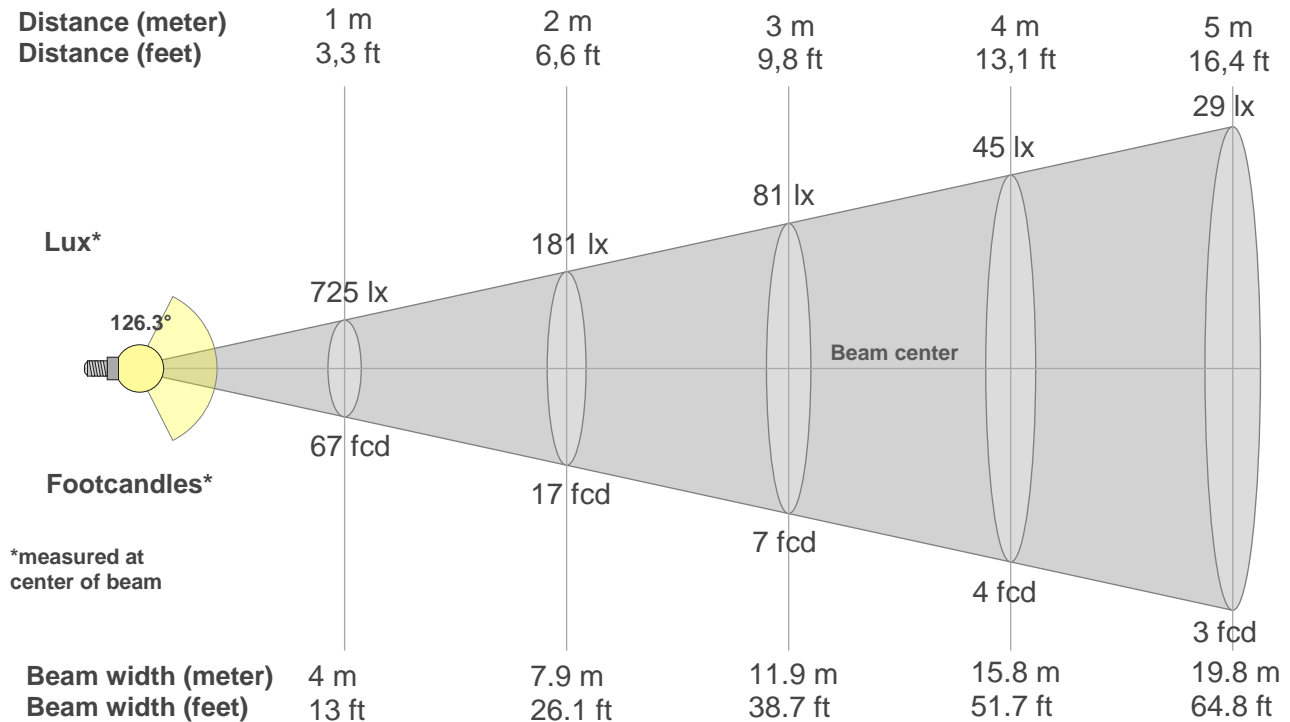
Rf 90.5
Fidelity index Rf

Rg 99.7
Gammut index Rg

Hue Bin	R _f	Graphic shifts (%)	
		Chroma	Hue
1	93	-1%	1%
2	96	0%	1%
3	94	0%	0%
4	92	-3%	-1%
5	88	-6%	-1%
6	96	-2%	0%
7	93	-3%	2%
8	89	-3%	5%
9	87	-2%	11%
10	83	0%	10%
11	82	4%	9%
12	95	2%	2%
13	94	4%	0%
14	94	1%	-1%
15	82	10%	-8%
16	96	-1%	1%



Beam details



Beam intensities from 1-20m

1m	2m	3m	4m	5m	6m	7m	8m	9m	10m	11m	12m	13m	14m	15m	16m	17m	18m	19m	20m
3.3ft	6.6ft	9.8ft	13.1ft	16.4ft	19.7ft	23ft	26.2ft	29.5ft	32.8ft	36.1ft	39.4ft	42.7ft	45.9ft	49.2ft	52.5ft	55.8ft	59.1ft	62.3ft	65.6ft
725lx	181lx	81lx	45lx	29lx	20lx	15lx	11lx	9lx	7lx	6lx	5lx	4lx	4lx	3lx	3lx	3lx	2lx	2lx	2lx
67.4fcd	16.8fcd	7.5fcd	4.2fcd	2.7fcd	1.9fcd	1.4fcd	1.1fcd	0.8fcd	0.7fcd	0.6fcd	0.5fcd	0.4fcd	0.3fcd	0.3fcd	0.3fcd	0.2fcd	0.2fcd	0.2fcd	0.2fcd

Intensities in 0° c-plane

0°	9°	18°	27°	36°	45°	54°	63°	72°	81°	90°	99°	108°	117°	126°	135°	144°	153°	162°	171°
725	712	684	637	574	495	403	300	189	84	18	6	5	4	4	4	4	4	4	4
100%	98%	94%	88%	79%	68%	56%	41%	26%	12%	2%	1%	1%	1%	1%	1%	1%	1%	1%	1%

Intensities in 90° c-plane

0°	9°	18°	27°	36°	45°	54°	63°	72°	81°	90°	99°	108°	117°	126°	135°	144°	153°	162°	171°
725	718	693	653	603	542	477	410	341	276	215	160	114	78	50	28	12	6	4	5
100%	99%	96%	90%	83%	75%	66%	57%	47%	38%	30%	22%	16%	11%	7%	4%	2%	1%	1%	1%

Intensities in 180° c-plane

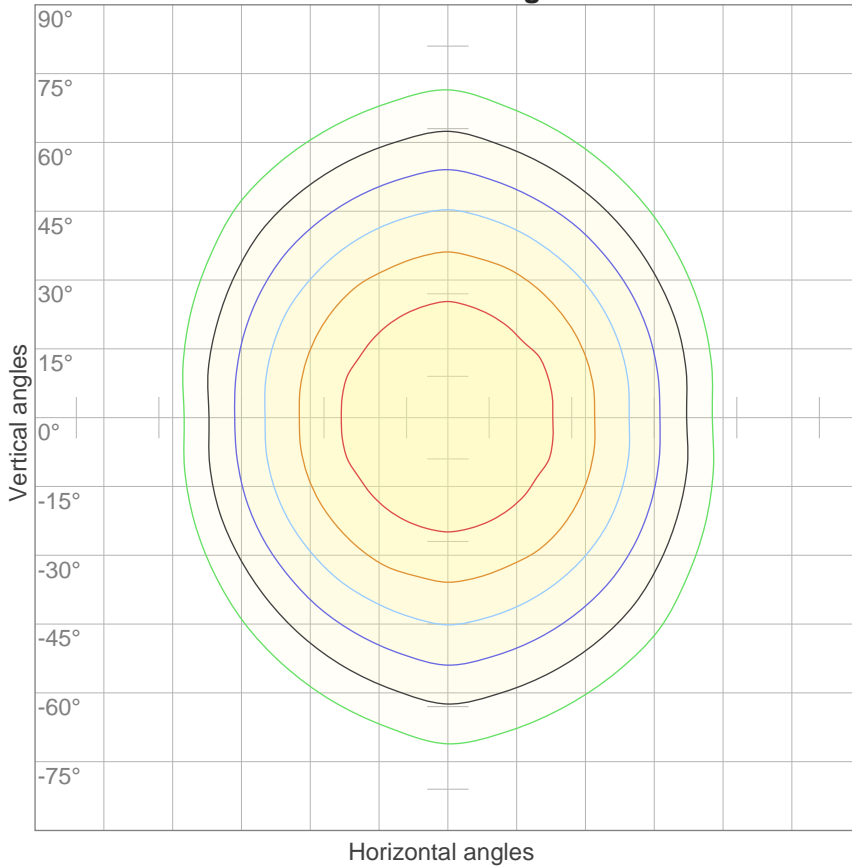
0°	9°	18°	27°	36°	45°	54°	63°	72°	81°	90°	99°	108°	117°	126°	135°	144°	153°	162°	171°
725	713	685	640	577	498	405	299	185	81	25	16	13	9	7	6	5	5	4	5
100%	98%	95%	88%	80%	69%	56%	41%	26%	11%	3%	2%	2%	1%	1%	1%	1%	1%	1%	1%

Intensities in 270° c-plane

0°	9°	18°	27°	36°	45°	54°	63°	72°	81°	90°	99°	108°	117°	126°	135°	144°	153°	162°	171°
725	718	693	654	604	544	479	410	342	278	218	165	119	82	53	32	18	10	7	5
100%	99%	96%	90%	83%	75%	66%	57%	47%	38%	30%	23%	16%	11%	7%	4%	2%	1%	1%	1%

Beam angle 50%	Field angle 10%	Cutoff angle 2,5%	Intensity ratio in 120° cone	Intensity ratio in 90° cone
126.3°	205.8°	247.1°	62.0%	40.9%

ISO candela diagram



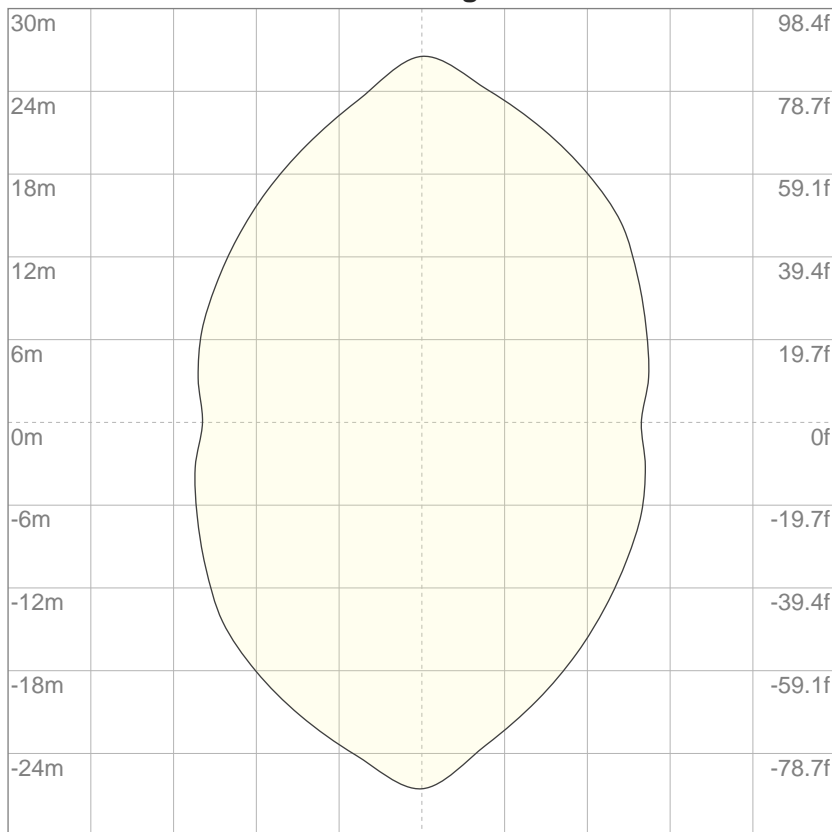
10%	72 cd
20%	145 cd
30%	217 cd
40%	290 cd
50%	362 cd
60%	435 cd
70%	507 cd
80%	580 cd
90%	652 cd

Conditions:

Number of c-planes: 8

Candela at center: 725 cd

ISO lux diagram



3%	0.217 lx
5%	0.362 lx
10%	0.725 lx
30%	2.17 lx
50%	3.62 lx

Conditions:

Number of c-planes: 8

Lux at center: 7.25 lx

Lux distribution on a surface when lamp is mounted at 10 meters from the surface.

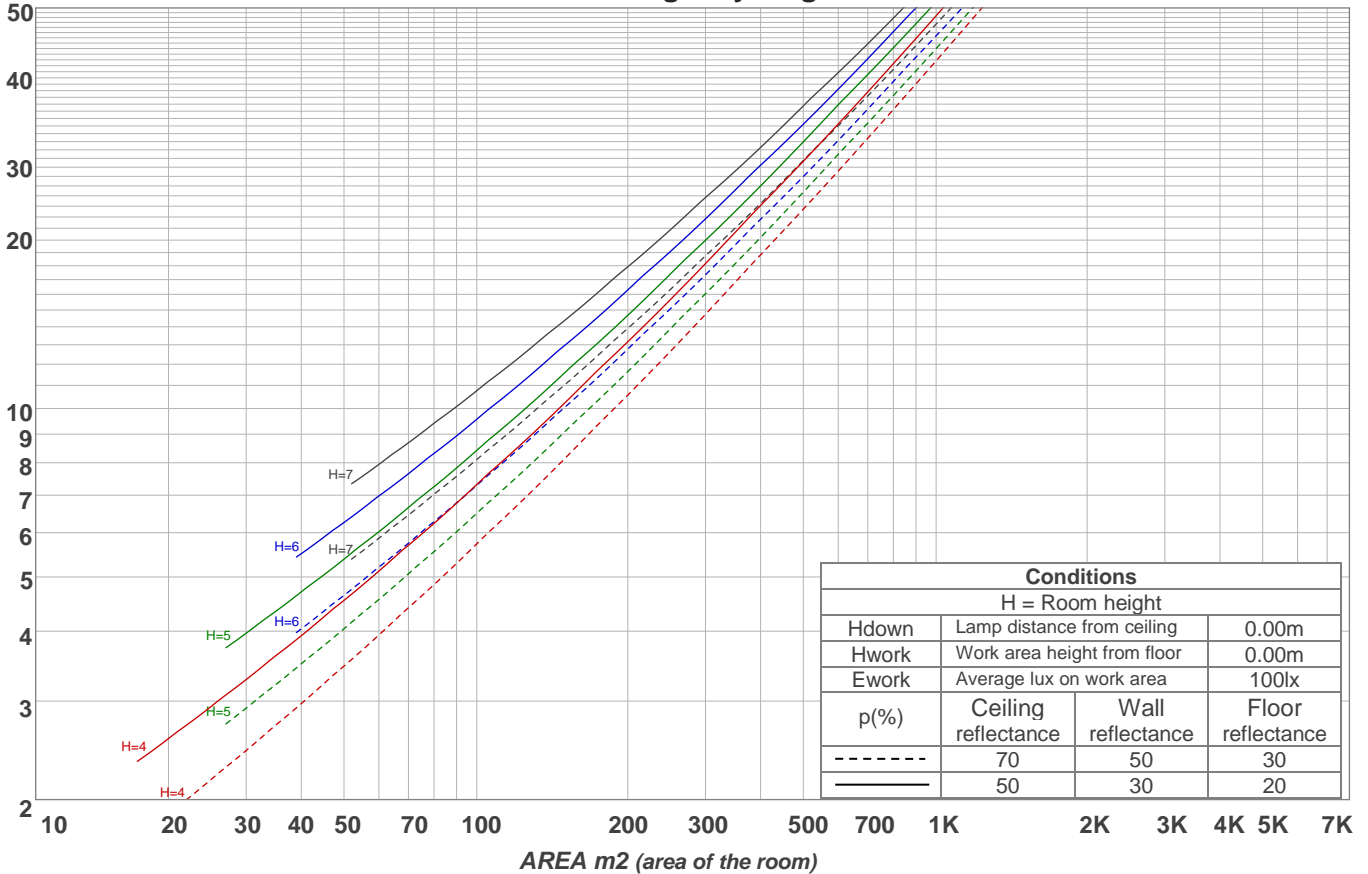
Mounting height: 10 meters (33 feet)

Coefficients of Utilization

Ceiling reflectance	80				70				50			30			10			0	
	70	50	30	10	70	50	30	10	50	30	10	50	30	10	50	30	10	0	
Wall reflectance																			
Floor reflectance	20	20	20	20	20	20	20	20	20	20	20	20	20	20	20	20	20	20	0
RCR	(RCR: Room Cavity Ratio) Room Values are expressed as percentage of Lumens delivered to the task surface																		
0	117	117	117	117	113	113	113	113	105	105	105	99	99	99	93	93	93	90	
1	104	98	93	88	100	95	90	86	89	85	81	83	80	77	78	75	73	70	
2	94	84	77	70	90	81	74	68	76	70	65	71	66	62	67	63	59	56	
3	85	73	64	57	81	71	63	56	66	59	54	62	56	51	58	53	49	47	
4	77	64	55	48	74	62	54	47	59	51	45	55	49	43	52	46	42	39	
5	71	57	48	41	68	56	47	40	52	45	39	49	43	37	46	41	36	33	
6	65	51	42	35	63	50	41	35	47	39	34	44	38	33	42	36	31	29	
7	60	46	37	31	58	45	37	31	43	35	30	40	34	29	38	32	28	26	
8	56	42	33	27	54	41	33	27	39	32	26	37	30	25	35	29	25	23	
9	52	39	30	25	50	38	30	24	36	29	24	34	27	23	32	26	22	20	
10	49	36	28	22	47	35	27	22	33	26	21	31	25	21	30	24	20	18	

LAMPS (number of lamps)

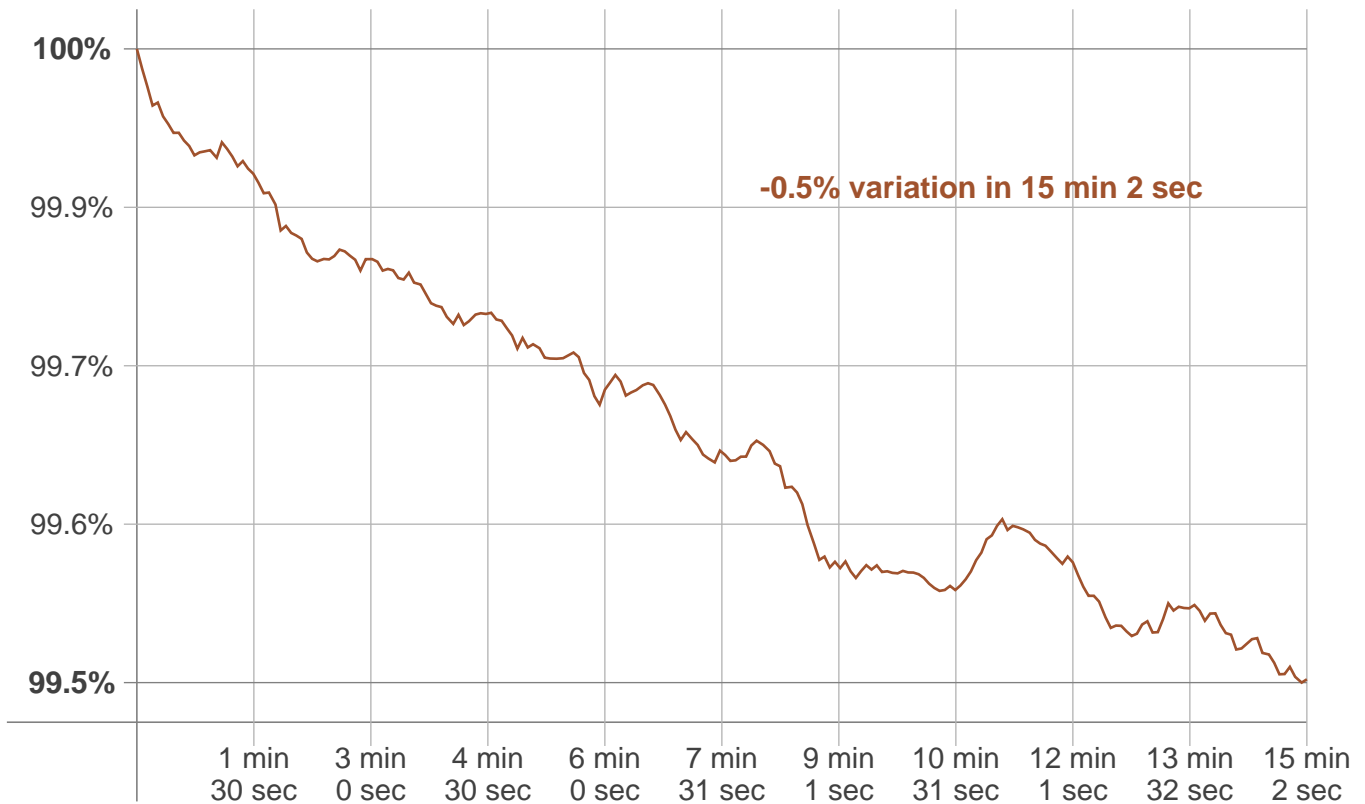
Luminaire budgetary diagram



Zonal Lumen Summary

0°-10°	10°-20°	20°-30°	30°-40°	40°-50°	50°-60°	60°-70°	70°-80°	80°-90°
68.6 lm	198 lm	303 lm	373 lm	401 lm	388 lm	336 lm	259 lm	179 lm
90°-100°	100°-110°	110°-120°	120°-130°	130°-140°	140°-150°	150°-160°	160°-170°	170°-180°
120 lm	76.6 lm	45.7 lm	24.8 lm	11.9 lm	5.35 lm	2.65 lm	1.34 lm	0.436 lm

Warmup curve



Warmup result

Warmup time:	15 min 2 sec
Warmup variation	-0.5%

Warmup conditions

Stable period:	15 min
Stable change max:	2.0%
Minimum time:	15 min

Color temperature change

CCT start	CCT change	CCT end
5708 K	-7 K	5701 K

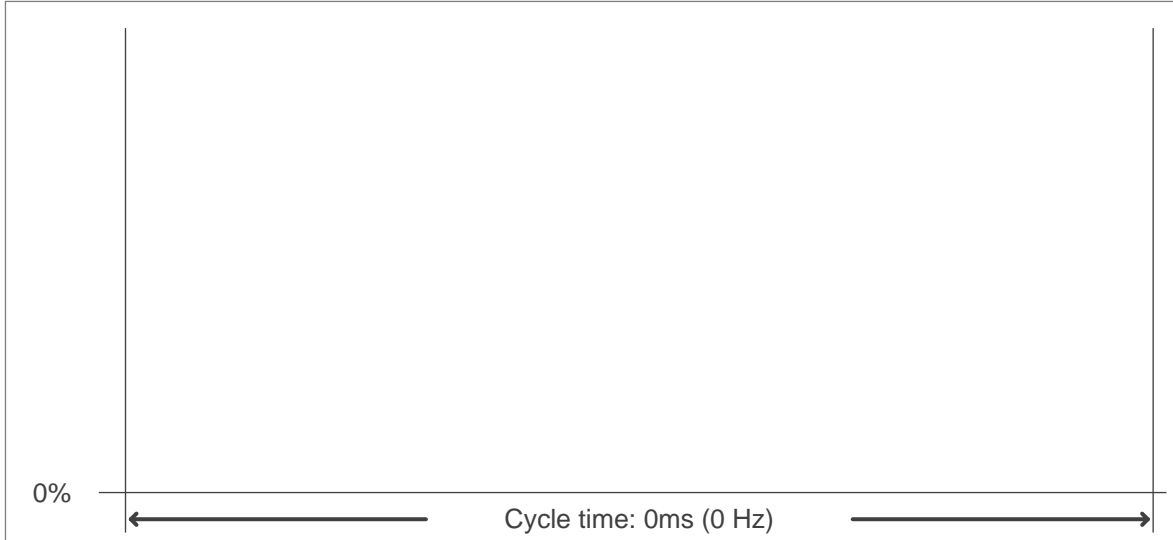
Output change

Output start	Output change	Output end
2807 lm	-12 lm	2795 lm

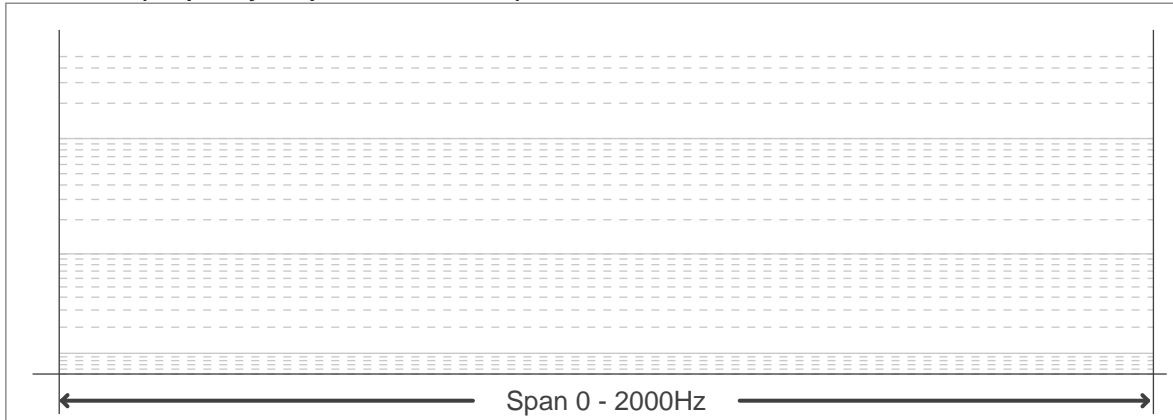
Flicker curve (complete sampled flicker signal)



Flicker frame (frame of one flicker period)



Flicker FFT (frequency scope of flicker curve)



Flicker results:

Flicker frequency:	n/a Hz
Flicker index:	n/a
Flicker percentage:	n/a %
SVM: (Visual flicker)	n/a

Flicker conditions:

Sample rate:	0 samples/second
--------------	------------------